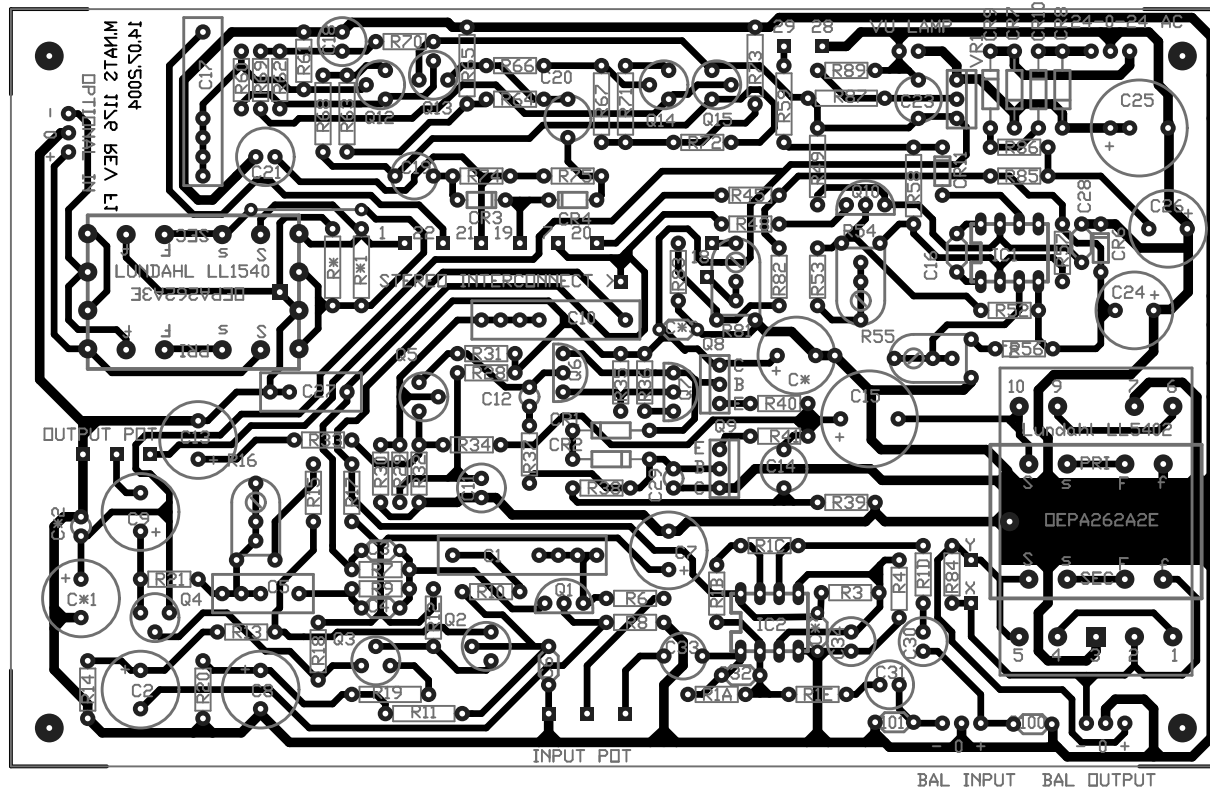


1176 COMPRESSOR CLONE MAIN PCB BASED ON GYRAF REV #7 (THANK YOU JAKOB)

USES ORIGINAL BD517/518 OUTPUT  
TRANSISTOR PAIR  
LUNDAHL OUTPUT TRANSFORMER  
WIRED TO INCREASE GAIN TO 45dB  
EITHER LUNDAHL OR DEP INPUT OR  
OUTPUT TRANSFORMERS CAN BE USED  
WITHOUT MODIFICATION TO BOARD  
GROUNDS GROUPED AND RETURNED TO  
CENTRAL POINT ON BOARD

REV D: PADS FOR DEP INPUT  
TRANSFORMER  
SEVERAL MISSING TRACES ADDED  
STERED INTERCONNECT PAD ADDED  
GROUND TRACES INCREASED TO 50MIL  
MAIN POWER TRACES 50 MIL

REV E: MINDR TRACE/COMPONENT TWEAKS  
REV E1: FOR ORIGINALLY SPECIFIED OUTPUT TRANSISTORS  
REV F: FIXED LUNDAHL OUTPUT TRANSFORMER PADS



1176F1 Check Plot